

Shared Ground: Habitat, People & Parks



Agenda

- ✓ Case Study - Fay Bainbridge Park
- ✓ Funding, volunteers, partnerships
- ✓ Bainbridge Island-wide stewardship
- ✓ State-wide climate challenges and opportunities





Who are we?

Morgan Houk

Natural Resource Manager

Bainbridge Island Metro Park & Recreation District

Heidi Urish

Community Programs and Events Manager

Bainbridge Island Parks & Trails Foundation

Matthew Lurie

Environmental Planner, Habitat Strategic Initiative Lead

Washington State Department of Fish and Wildlife

Megan Rohrssen

Community Education Coordinator

Bainbridge Island Land Trust





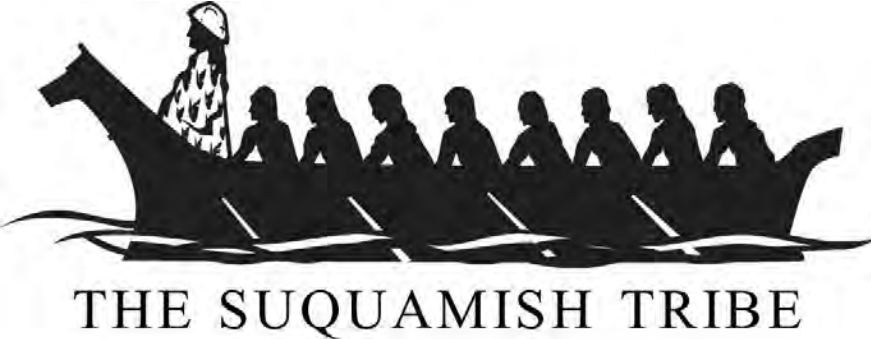
Fay Bainbridge Park

- 17-acres
- 1,420 Feet of shoreline
- Sunrise Watershed



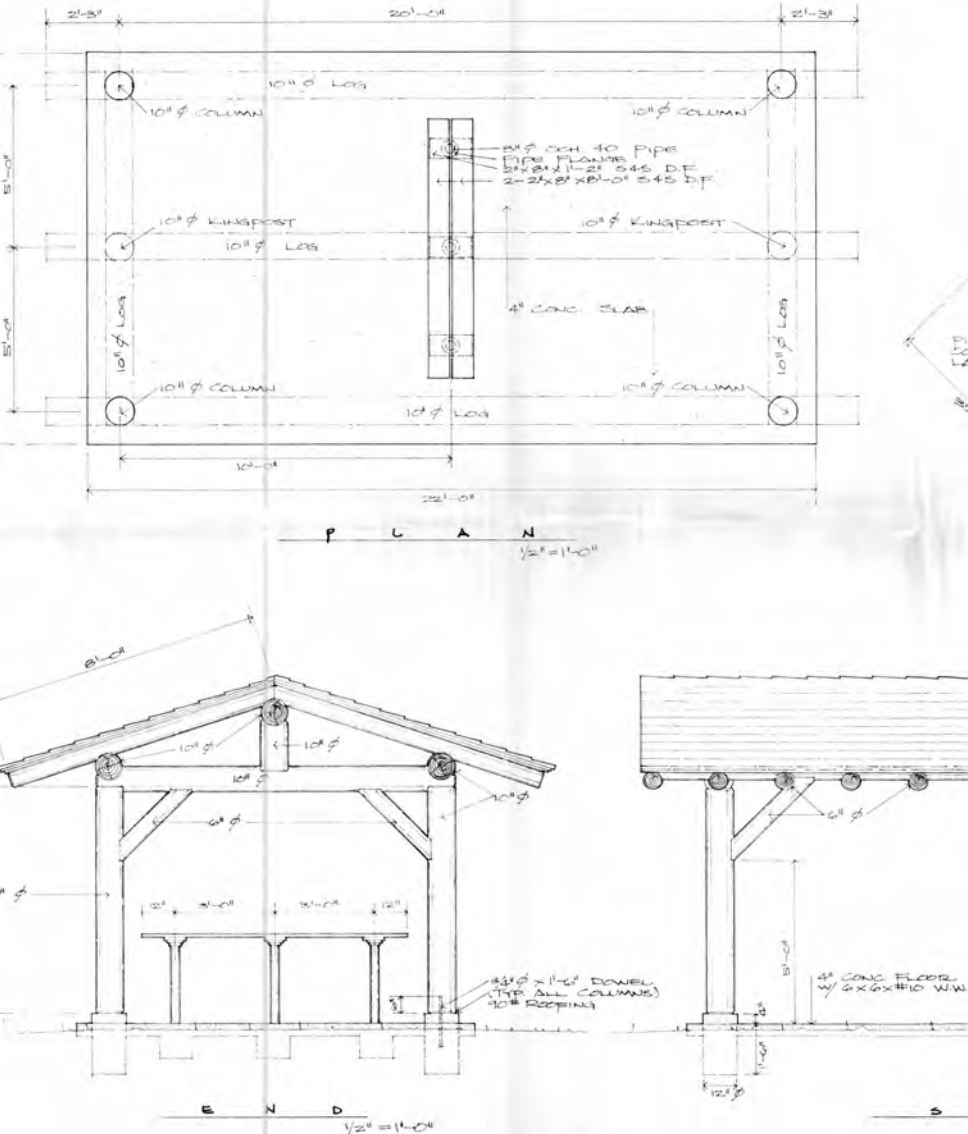


Photos: Suquamish Tribe, <https://suquamish.nsn.us/>



Post Colonial History

- “Faybrooke”
 - Early 1900s - 1944
- Washington State Parks
 - 1944 - 2011
- Bainbridge Island Metro Park & Recreation District
 - 2011 - Present



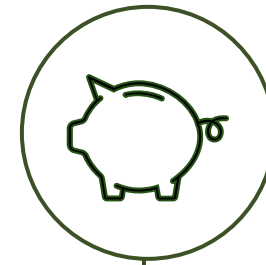
Sustainability Drivers



Ecological



Social



Economic

Sea Level Rise

What impacts does SLR have on...

Nearshore habitat?

Residential homes?

Park infrastructure?

Pollution?



<https://www.climate.gov/maps-data/dataset/sea-level-rise-map-viewer>



What ecosystem services are being provided here?



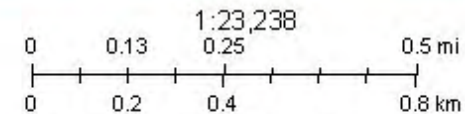
Forage Fish Spawning



3/23/2026

- World_Boundaries_and_Places
- Pre-spawner Herring Holding Areas
- Smelt Spawning
- Low Resolution 15m Imagery
- Herring Spawning
- High Resolution 60cm Imagery

- High Resolution 30cm Imagery
- Citations
- 4.8m Resolution Metadata



County of Kitsap, Esri, HERE, Garmin, IPC. These data were collected by WDFW staff with contributions from the North Olympic Salmon Coalition and

<https://wdfw.maps.arcgis.com/apps/mapviewer/index.html?webmap=19b8f74e2d41470cbd80b1af8dedd6b3&extent=-126.1368,45.6684,-119.6494,49.0781>

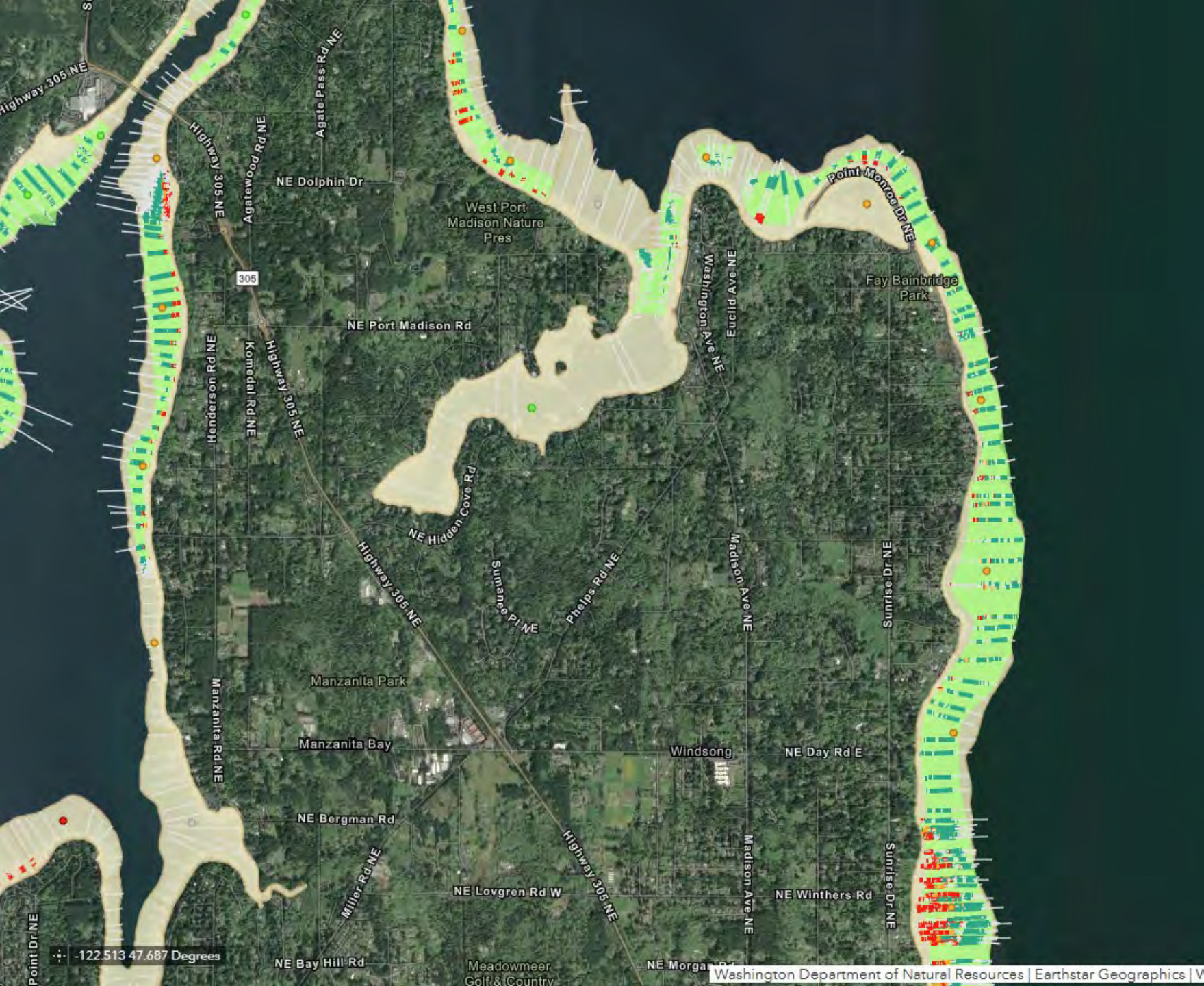


Puget Sound Eelgrass

Legend

Seagrass Species

- Eelgrass
- Eelgrass and *Z. japonica* mix
- Eelgrass and Surfgrass mix
- *Z. japonica*
- Surfgrass
- No seagrass



<https://dnr.wa.gov/aquatics/aquatic-science/nearshore-habitat-program/puget-sound-eelgrass-monitoring-data-viewer>



Infrastructure

- “Passive” and “active” recreation
- Camping
- Public art
- Playgrounds
- Picnic shelters
- Bathrooms
- Trails
- And More!





Photos: Bainbridge Island Parks & Trails Foundation,
Bainbridge Island Metro Parks





BAINBRIDGE ISLAND
**PARKS
& TRAILS**
FOUNDATION







OUR ISLAND IMPACT

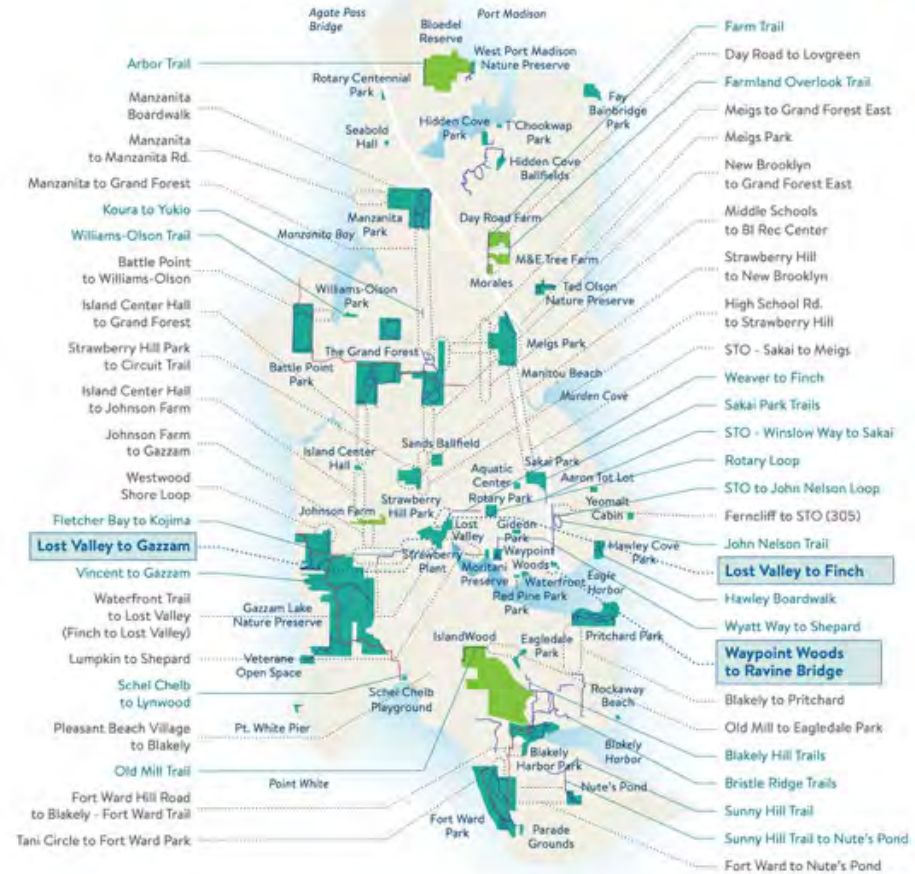
34 places on Bainbridge Island where the Parks & Trails Foundation has made a difference

- Port Madison Nature Preserve:** Trail repair and stewardship
- Fay Bainbridge Park:** New boardwalks, renovated beach volleyball courts, stewardship
- Hidden Cove Park:** Park District partner in constructing new dock, planning Hidden Cove Trail system expansion
- 8 Acre Woods:** Facilitated gift of new neighborhood park
- Manzanita Park:** Trail repair and stewardship
- Ted Olson Preserve:** Stewardship, grant supporting 2-acre park addition
- Williams-Olson Park:** Planning and funding park improvements including new picnic shelter
- Koura-to-Yukio Trail:** New walking and biking trail
- Battle Point Park:** KidsUp! The Next Generation of Play, pump track, new gymnastics equipment, soccer field amenities, Pickleball Founders Courts, observatory and roller hockey improvements
- Day Road Farmland:** Planning and funding new public trails
- Meigs Park:** Planning advocacy, trail route planning
- The Grand Forest:** Preserve Grand Forest East, trail maintenance, restored bridge, forest research
- Sakai Park:** Trail planning and construction, tennis courts, tree planting
- Aquatic Center:** Community grants for lane lines, drinking fountains, swim team and water polo amenities, fiscal sponsor for steam room
- Strawberry Hill Park:** Two 10-acre additions for biking, expanded dog park, funding leadership for skatepark and bike park
- Rotary Park:** Owen's Playground, Caregiver sculpture, Community Grant for Little League covered playing facility, trail construction
- Yeomalt Cabin:** Fiscal sponsor for cabin renovation
- Gideon Park:** Invasive weed removal
- Hawley Cove Park:** Funding for new boardwalks, beach cleanup workparties
- Waypoint Woods:** Developing new Winslow park with trail connections, memorial bench
- Moritani Preserve:** Ongoing ecological restoration
- Waterfront Park:** Restoration landscaping
- Sound to Olympics Trail:** Squamish Welcome Pole, greenway and trail connections
- Lost Valley:** Planning and easements for new trail system
- Gazzam Lake Preserve:** Trail construction, signage
- Pritchard Park:** Memorial bench shelter, trail repair
- Halls Hill Lookout:** Stewardship quiet, meditative wayside overlooking Blakely Harbor
- Eagledale Park:** Worked with neighbors to create Heyday Connector Trail, linking Eagledale to Blakely Harbor Park
- Schel Chelb:** Support for new playground, trail to Lynwood Center
- Blakely Harbor Park:** Ongoing park development and restoration activities
- Fort Ward Parade Ground:** Playground
- Fort Ward Park:** Trail stewardship, ecological restoration
- Fort Ward Community Hall:** Grants for renovation
- Nute's Pond:** Stewardship and trail connections



GROWING OUR TRAILS

51 places where the Parks & Trails Foundation is working with the Park District, City, and supporters like you to expand our trail system



- Completed trails
- Park District maintained trails
- Areas of opportunity for future trails
- Long-distance trails

PO Box 11127, Bainbridge Island, Washington 98110 T 206.842.4971 biparksfoundation.org













BAINBRIDGE ISLAND
**PARKS
& TRAILS**
FOUNDATION



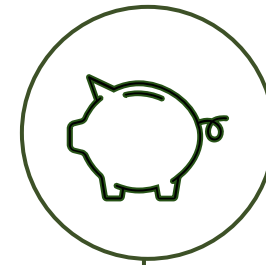
Sustainability Drivers



Ecological



Social



Economic

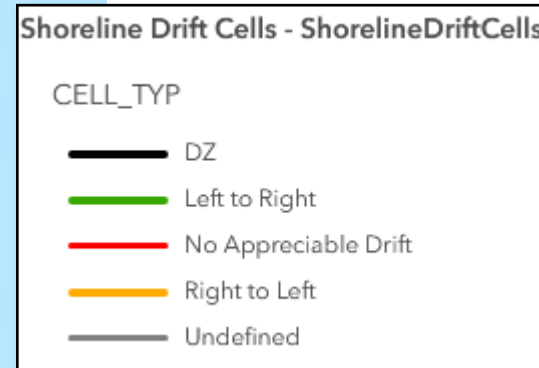
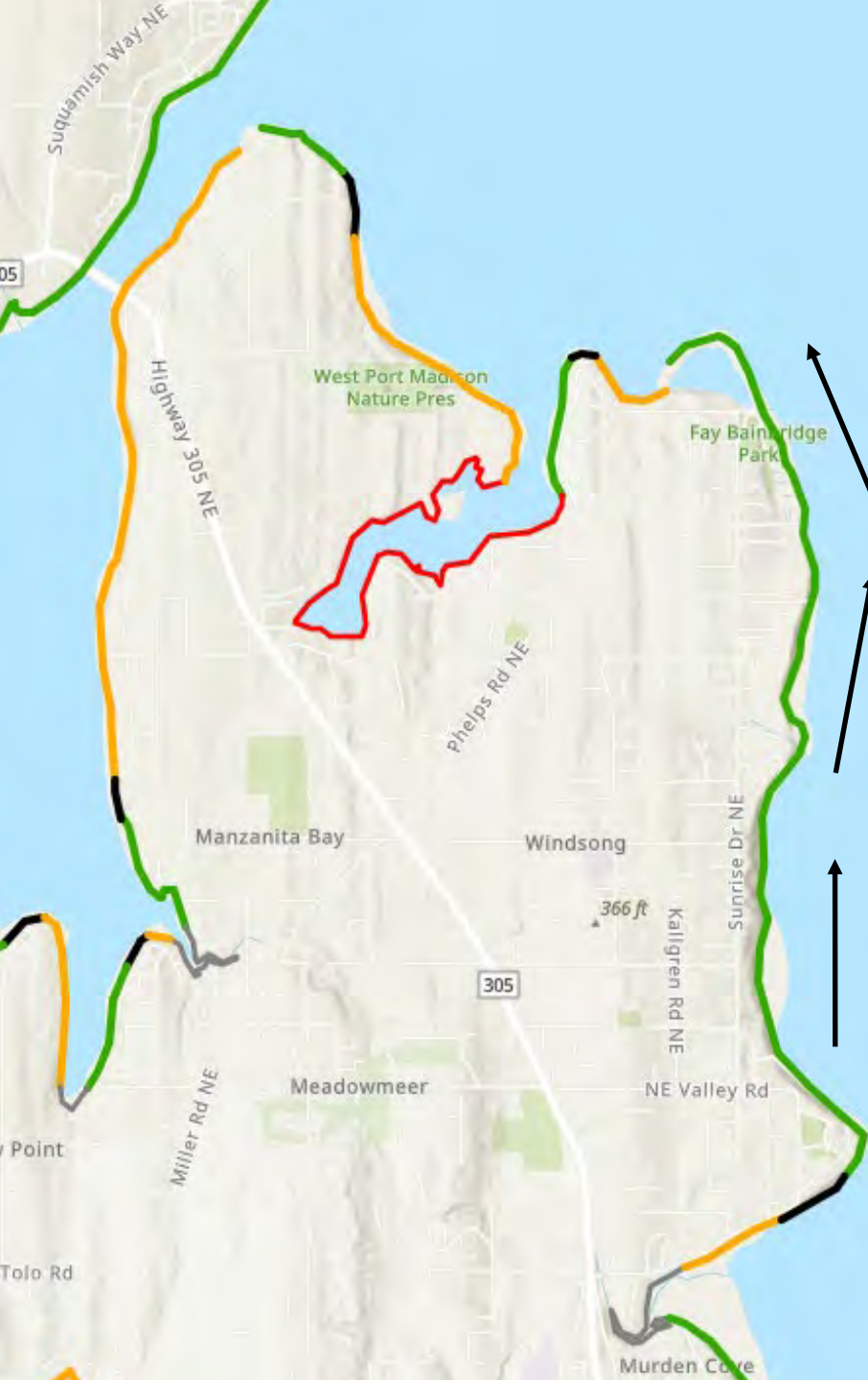
BAINBRIDGE ISLAND
LAND TRUST

EST. 1989

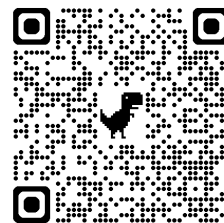


Island-Wide Stewardship

- Fay Bainbridge Park exists within connected shoreline context
- Unarmored shoreline encourages natural movement of beach material, sustaining nearshore landforms along the whole drift cell



Map source



BAINBRIDGE ISLAND
LAND TRUST

EST. 1989

Island-Wide Stewardship



**BAINBRIDGE ISLAND
CONSERVATION LANDS**
Bainbridge Island Land Trust | January 2026

■ BILT PROTECTED
■ OTHER PROTECTIONS

**CONSERVATION
VALUES INDEX**

HIGH: 75
CVI is based on presence of features such as forest cores, wetlands, streams, aquifer recharge areas, natural vegetation, and sensitive species breeding sites

LOW: -8
Includes human-altered areas such as buildings and paving

0 0.25 0.5 1 Miles



Powel Shoreline

- Powel Family reached out to BILT, built collaboration:

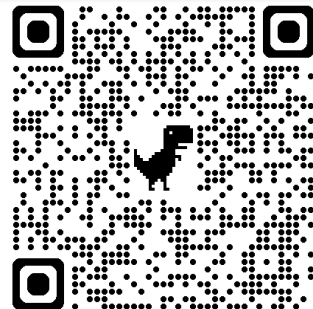
Powel Family, BILT, WA Sea Grant, Suquamish Tribe, WDFW, US Army Corps of Engineers, WA Recreation and Conservation Office, COBI, Coastal Geologic Services, JTC Inc. and Sound Rock, Sound Native Plants, Cultural Resources Consultants, Dukes Construction, volunteers, and more!



Largest restoration project on private property in Puget Sound at the time!

BAINBRIDGE ISLAND
LAND TRUST

EST. 1989



PUGET SOUND

National Estuary Program

STRATEGIC INITIATIVE LEADS



Washington
Department of
**FISH &
WILDLIFE**



Healthy and Resilient Shoreline Habitat in Puget Sound

Bainbridge Island Environmental Conference

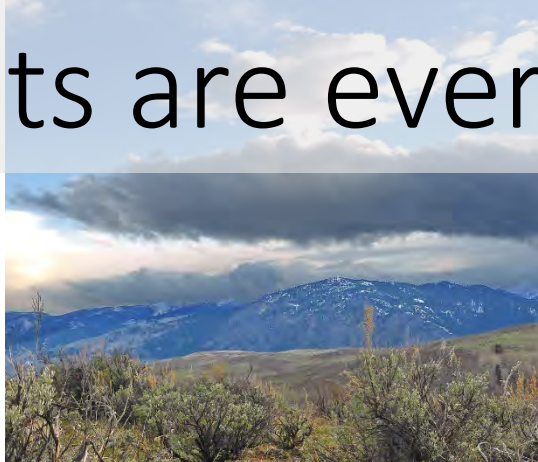
Matt Lurie | March 29, 2026

This project has been funded wholly or in part by the United States Environmental Protection Agency under assistance agreement PC-01J89501 to the Washington Department of Fish and Wildlife. The contents of this document do not necessarily reflect the views and policies of the Environmental Protection Agency or the Washington Department of Fish and Wildlife, nor does mention of trade names or commercial products constitute endorsement or recommendation for use.

Climate's fingerprints are everywhere



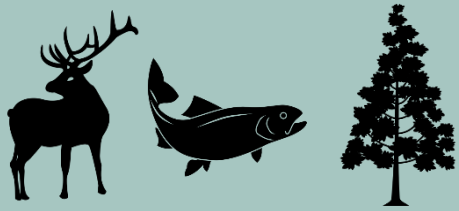
Climate's fingerprints are everywhere



Examples of climate-related vulnerabilities



Risks to Species Conservation & Recovery



Risks to Harvest & Recreation Opportunities



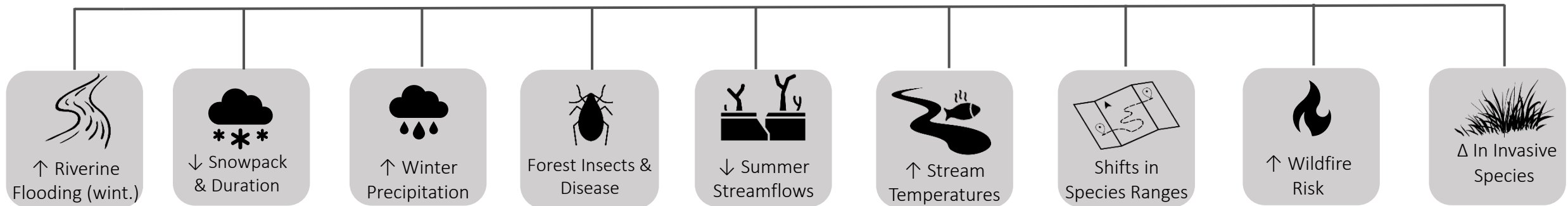
Risks to Providing Effective Technical Assistance, Permitting, Research & Planning



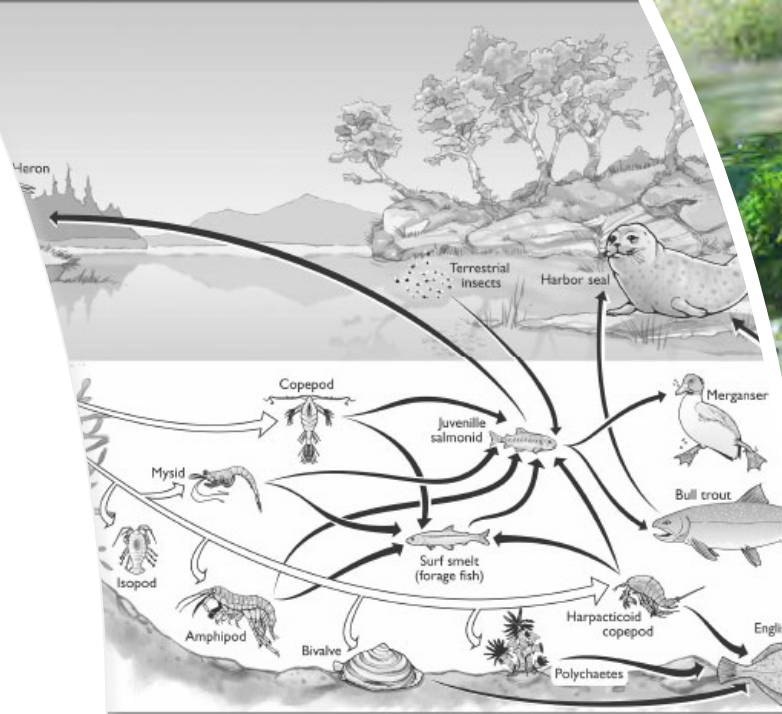
Risks to WDFW Lands & Infrastructure



Non-exhaustive list of climate drivers



Intact Habitat
Supports
Biodiversity and
Human wellbeing





Habitat Strategic Initiative Lead (HSIL)



The Habitat Strategic Initiative Lead (HSIL) advances recovery in Puget Sound by developing and funding strategies that improve the health of the rivers, forests, shorelines, estuaries, kelp, and seagrass.

HSIL is co-led by the WA State Dept. of Fish and Wildlife and the WA State Dept. of Natural Resources and uses EPA Geographic Program Funds to support priority recovery work across Puget Sound.





Climate Considerations for Puget Sound Nearshore Habitat





High tide reaches bulkhead

Deflected waves scour beach below bulkhead and coarsen nearby beaches

Image: Shore Friendly | Hugh Shipman

Addressing the Impacts of Shoreline Armor



PUGET SOUND
National Estuary Program
STRATEGIC INITIATIVE LEADS

HSIL Shoreline Armoring Implementation Strategy



Check out poster in the hallway



Strategies to support natural shoreline processes through the reduction of shoreline armor impacts.



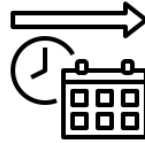
Incentives
Outreach
Education



Regulatory
and Policy
Environment



Coastal
Process-
based Design
and Technical
Training



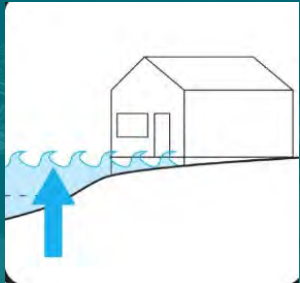
Long Term
Strategic
Planning



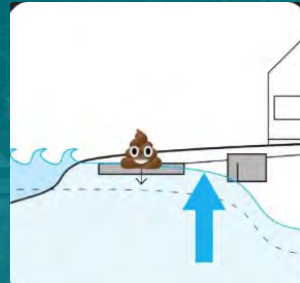
Increase the pace and effectiveness of shoreline habitat protection and restoration

Sea level rise considerations

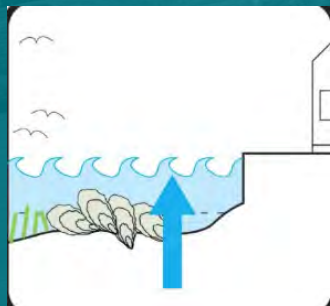
Mar 29, 2026



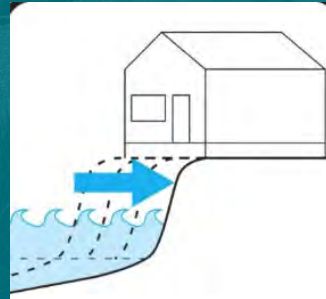
Coastal Flooding



Salinity and Water Quality Change



Habitat Loss



Erosion and Deposition



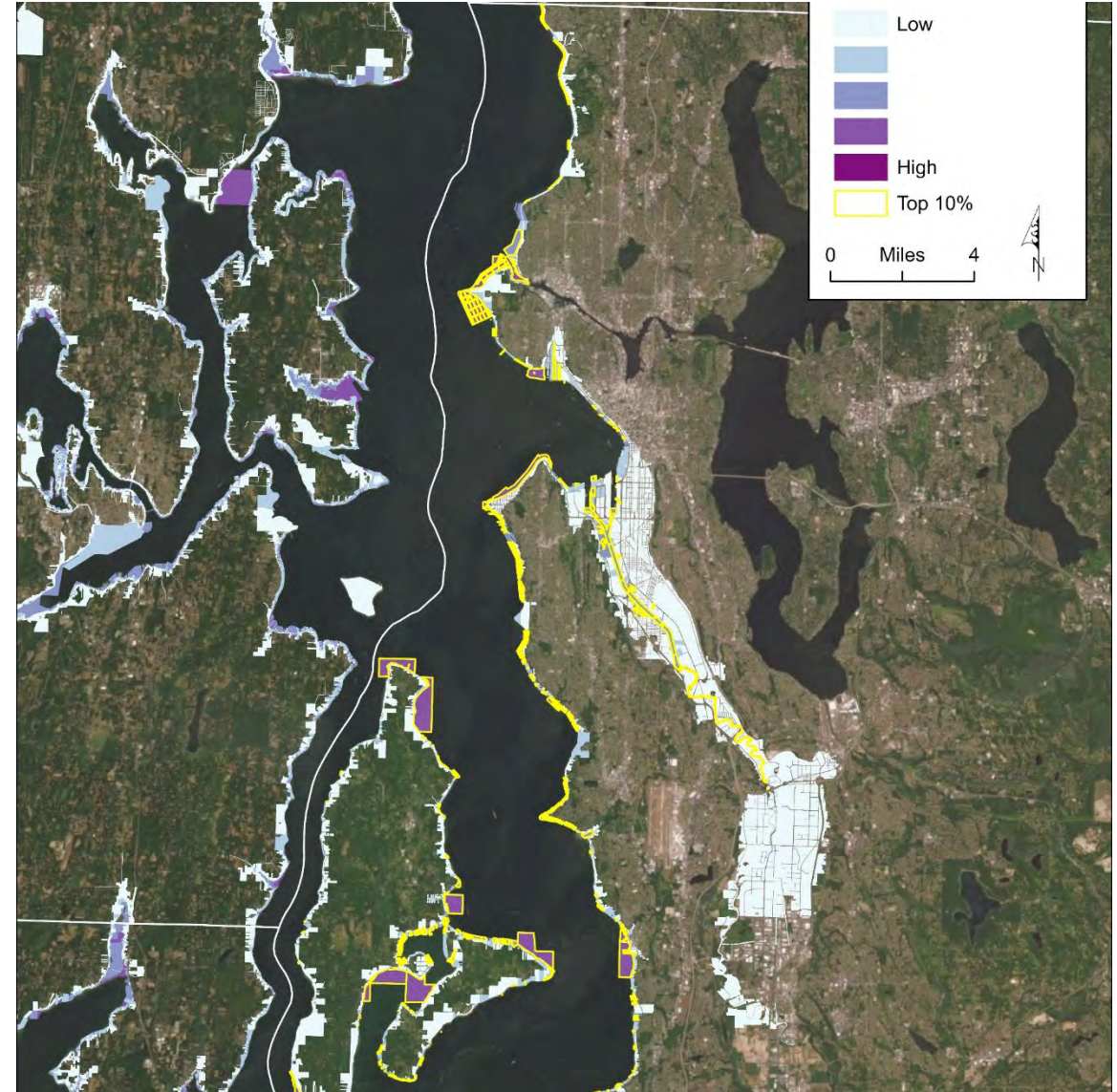
WDFW Hood Canal

Parcel-Scale Sea Level Rise Vulnerability for Puget Sound

Washington Sea Grant

This project uses mapping software and spatial data to calculate the vulnerability of land parcels in Puget Sound.

On each parcel the exposure to hazards exacerbated by sea level rise is calculated – particularly coastal flooding and erosion, and how those hazards interact with assets like buildings, roads, and habitats.



Advancing Coastal Process-Based Design in Puget Sound

Washington Department of
Ecology, Applied Coastal Resilience
and Engineering Team

This project will analyze existing
information from Puget Sound and
similar coastal landscapes
worldwide about nature-based
solutions on shorelines to identify
key knowledge gaps and
recommendations for future
coastal work.



Native vegetation

**Anchored logs absorb
energy from waves**

Shore Friendly partnership landowner strategic engagement



Washington Recreation and Conservation Office

Shore Friendly is focused on social behavior changes to inspire residential shoreline landowners to reduce and prevent shoreline armor.

This project creates social media campaigns, influencer trainings, and a personal and community engagement strategies to develop shoreline restoration projects in Puget Sound.

King Shore Friendly Video Shorts



Lisa Kaufman NWSF Shore Friendly Influencer Workshop

Reducing Impacts of Shoreline Armoring in Northern Puget Sound

Friends of San Juans

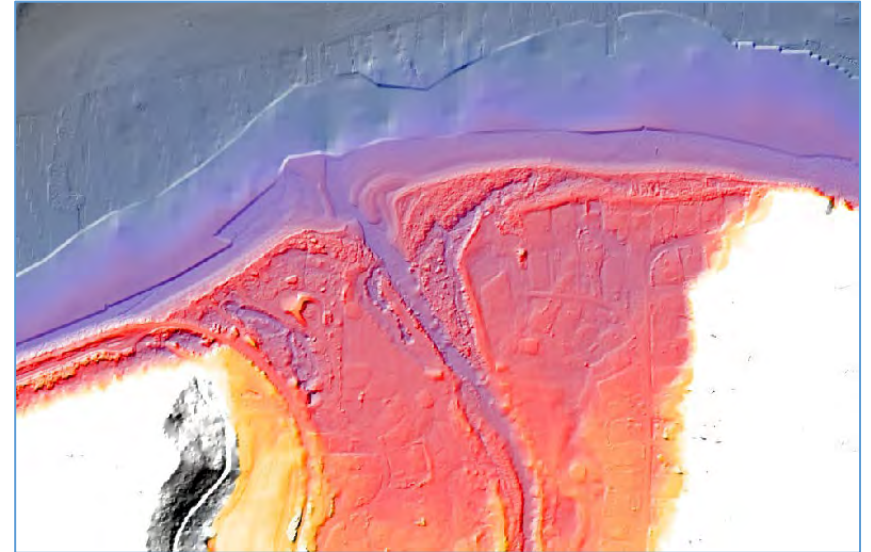
This project builds capacity to accelerate shoreline habitat restoration through technical trainings of staff and restoration work crews, providing shoreline information to land managers as well as feasibility and early design work to advance on-the-ground coastal enhancement actions.



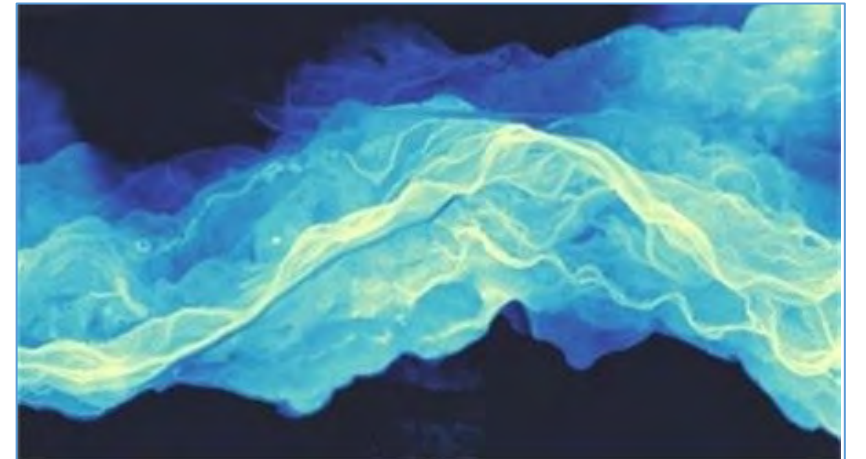
Strait of Juan de Fuca Topobathymetric Lidar

Clallam County in collaboration with
Jamestown S'Klallam Tribe and Washington
Sea Grant

This project will obtain high resolution
topobathymetric LiDAR data along the entire
209-mile coastline of the North Olympic
Peninsula.



Best DEM for Morse Creek. Note the errors and
discrepancies where the different data sources have
been cobbled together.



Topobathymetric LiDAR coverage of the Dungeness River.

Ways to Learn & Stay Connected

Matthew.Lurie@dfw.wa.gov
www.pugetsoundestuary.wa.gov



[HSIL Website](#)



[Funded Projects](#)



[HSIL YouTube Playlist](#)



[Strategic Initiative
Distribution List](#)



Thank You

Morgan Houk

morganhouk@biparks.org

Heidi Urish

heidi@biparksfoundation.org

Matthew Lurie

matthew.lurie@dfw.wa.gov

Megan Rohrsen

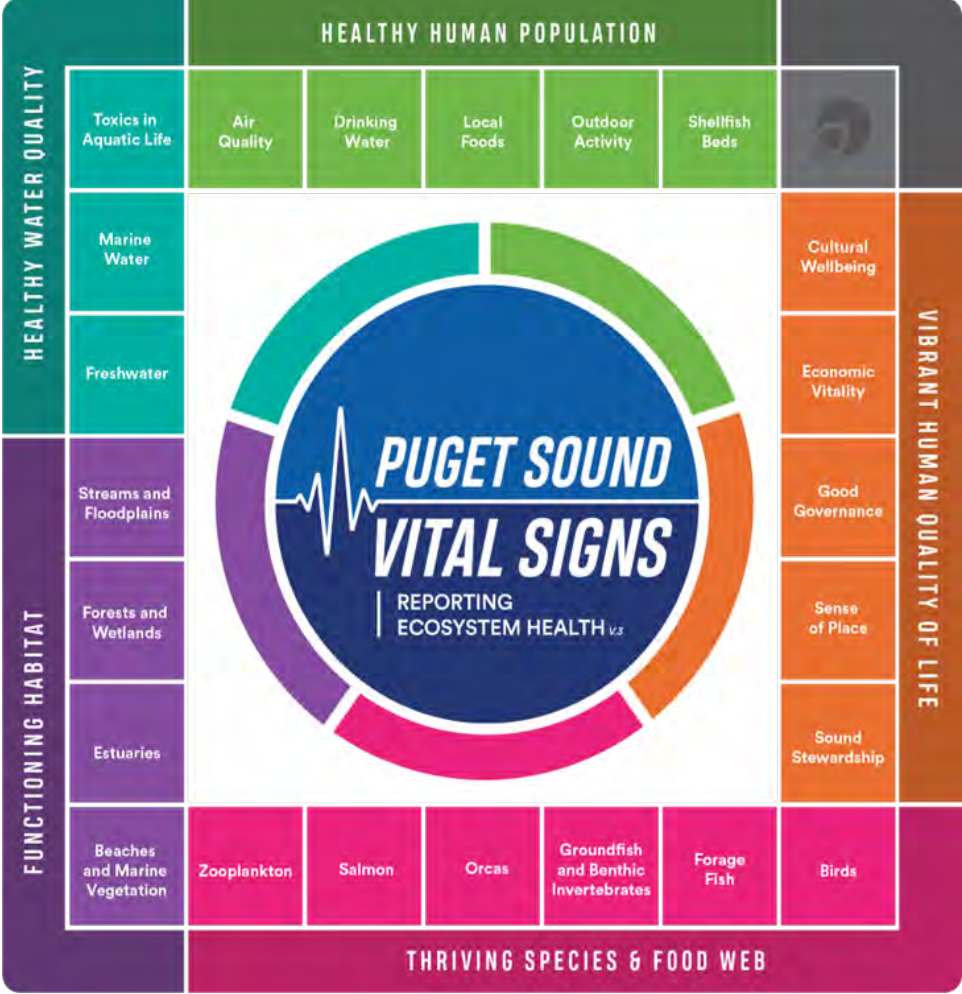
megan@bi-landtrust.org



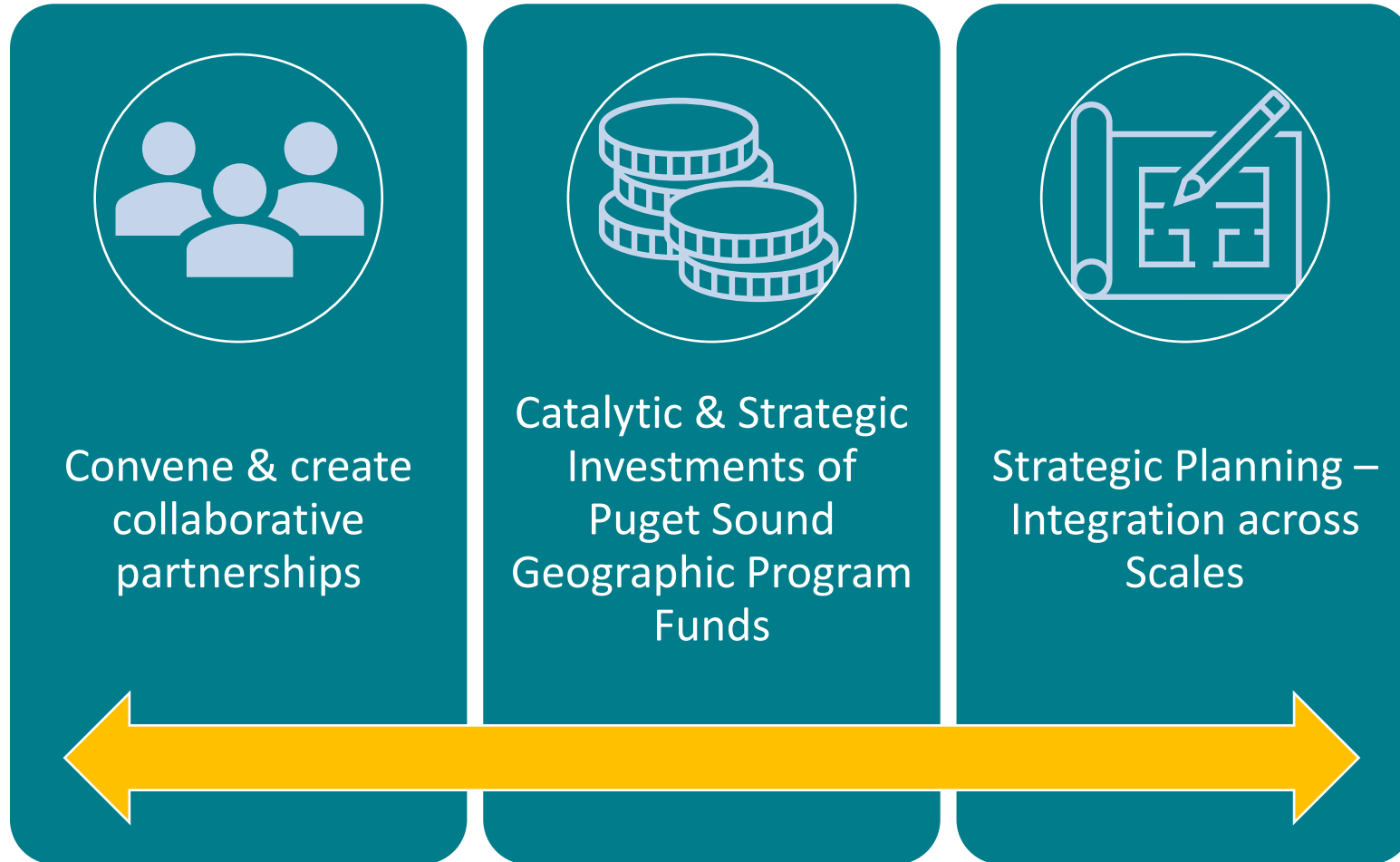
Extra Slides



Puget Sound Recovery



HSIL Pathways for Accelerating Recovery



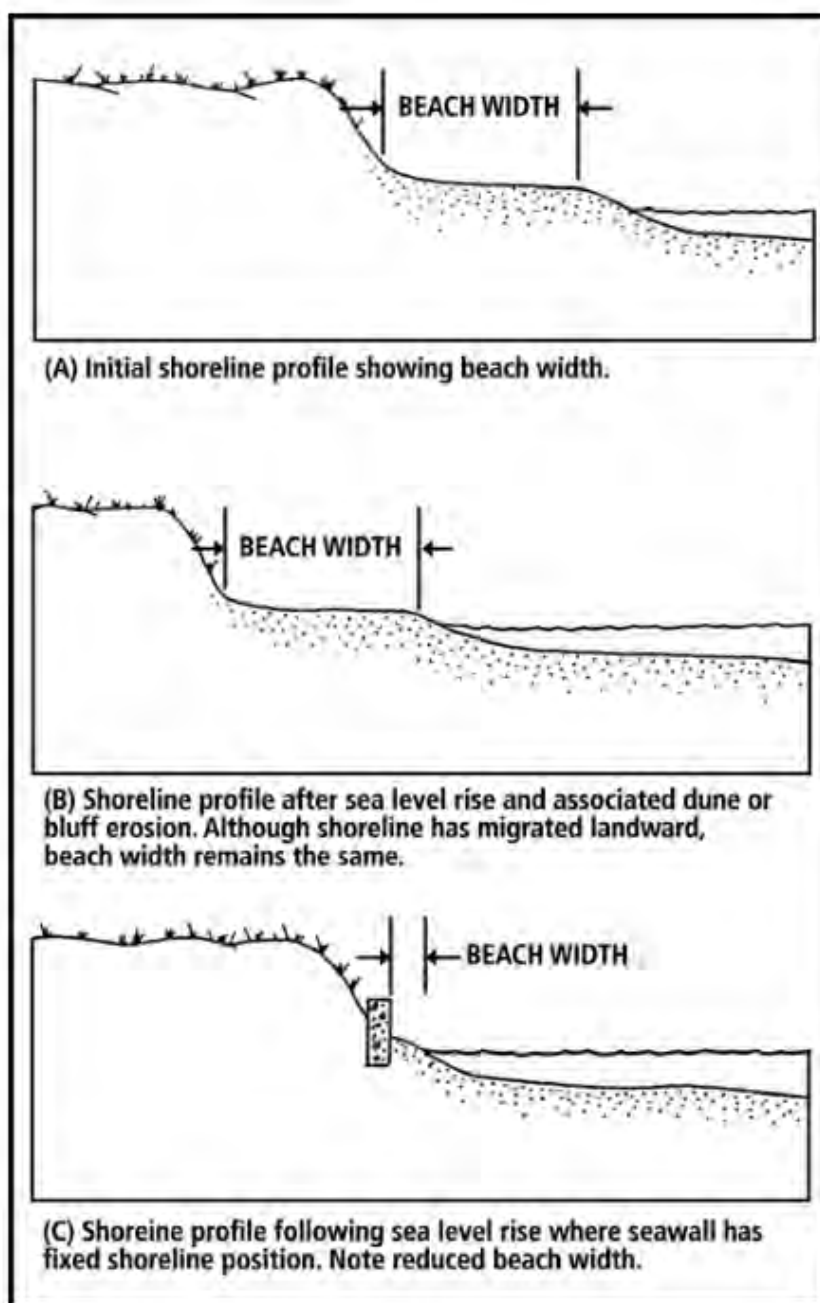


Figure 14. Example of beach width loss through passive erosion (Griggs et al.1994).

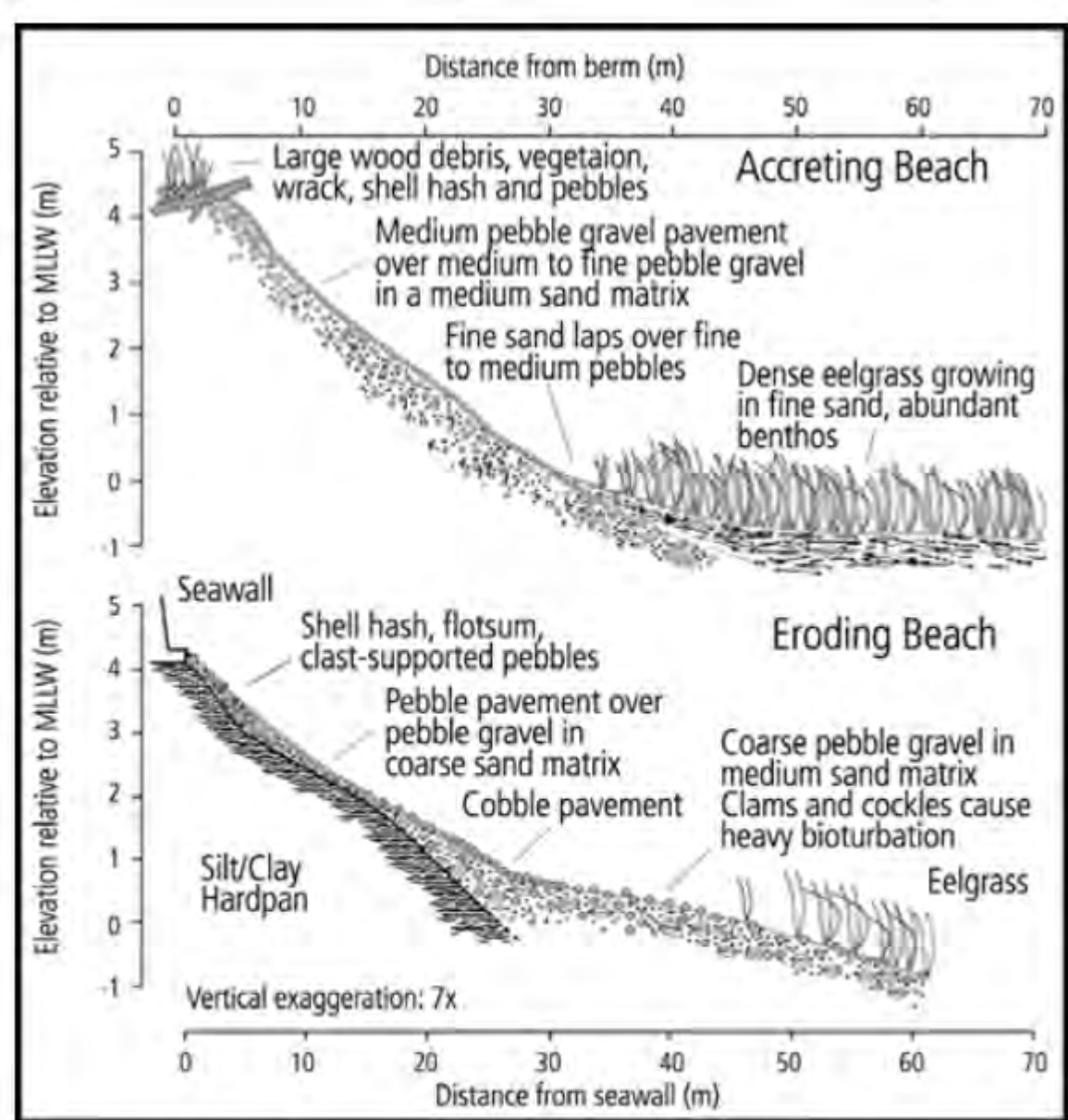
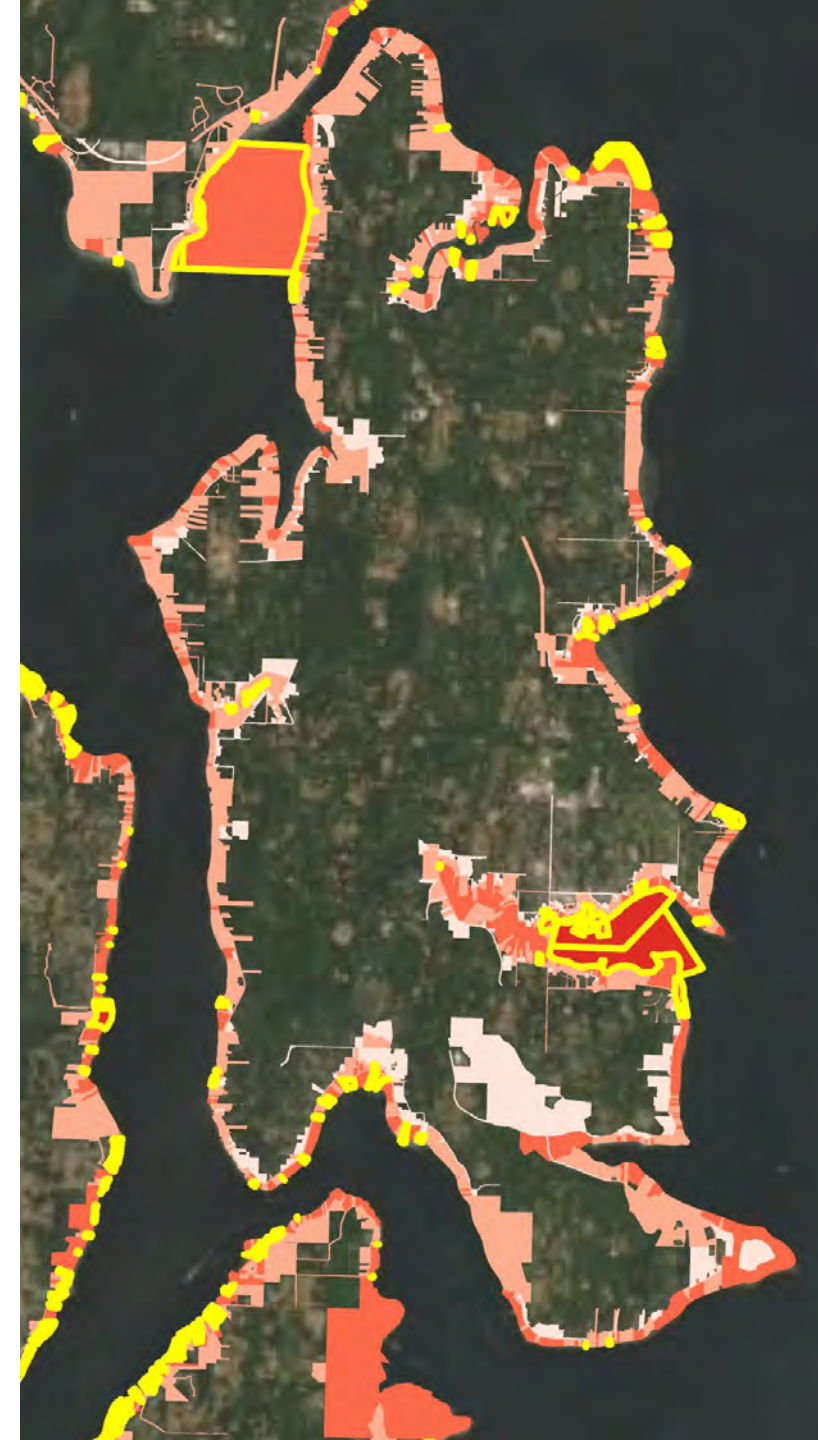
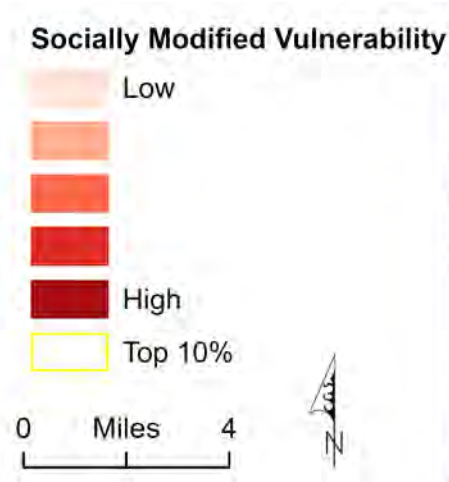


Figure 16. Beach profiles at nearby unmodified and accreting beach and bulkheaded eroding beach, with changes in substrate (Finlayson 2006).

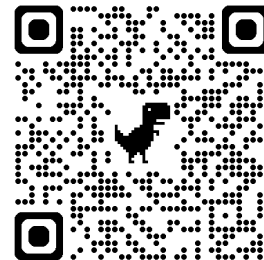
Island-Wide Stewardship

- Parcel-scale SLR vulnerability (Miller et al., 2023)
 - Low to high & top 10% most vulnerable!

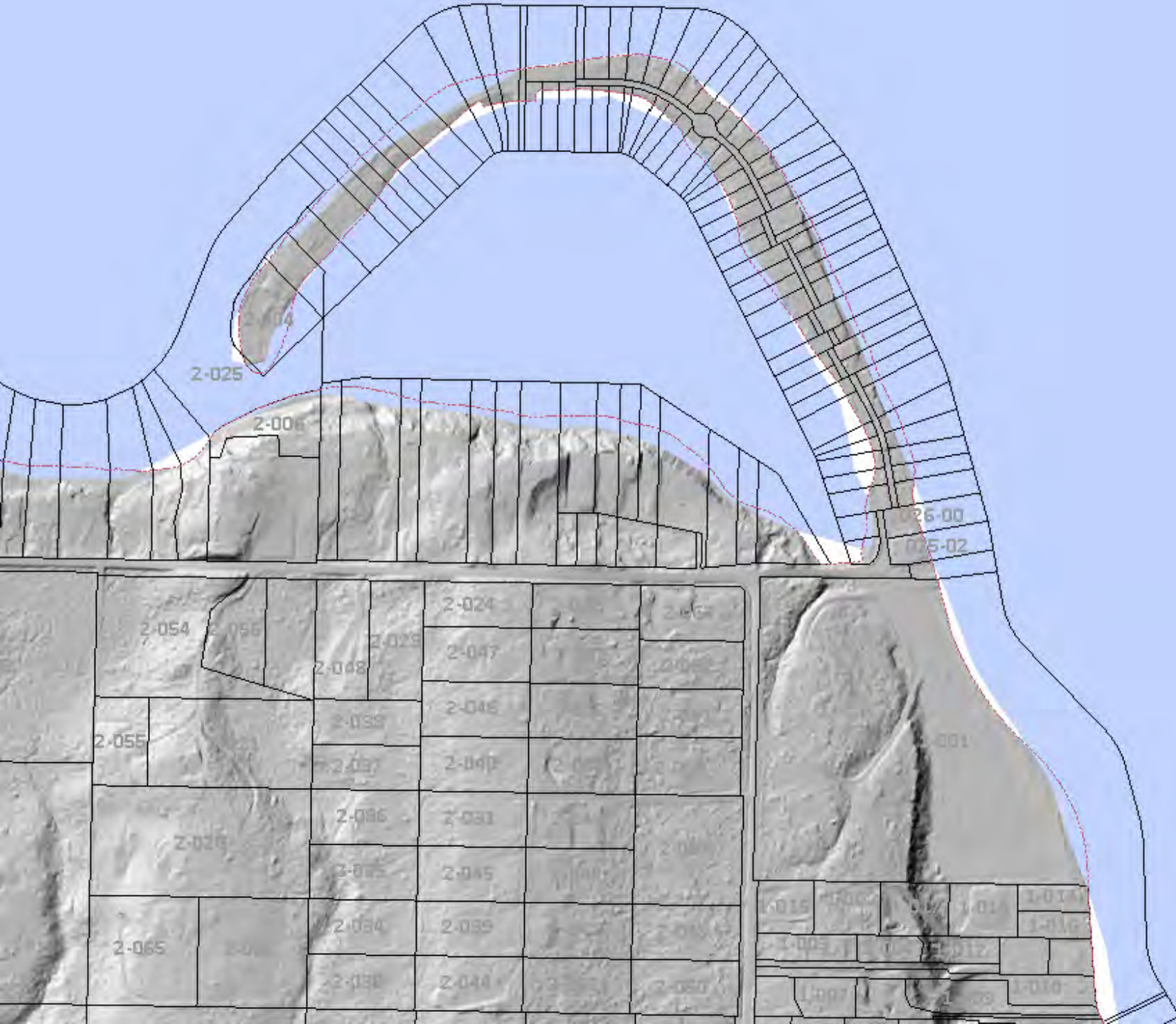


BAINBRIDGE ISLAND
LAND TRUST

EST. 1989



Shaded Relief Map



<https://psearch.kitsap.gov/psearch/>

